

safety platforms ltd

Over 20 Years of improving site safety



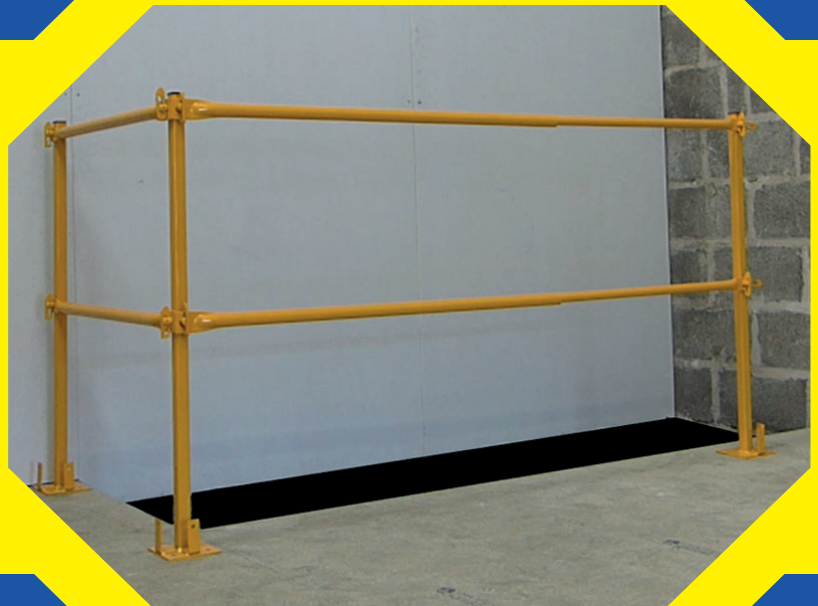
EASY STAIR

In Stock For Immediate Delivery!

- Speeds up build process
- Resolves late staircase delivery
- Prevents finished stairs damage
- Floor heights 2.65 - 3.05m
- SWL: 200kg
- Lightweight & easy to handle
- Only 5 minutes to install

TELESCOPIC GUARDRAILS

- Highly visible edge protection
- Speedy, safe guardrail fixings
- Suitable for straight runs or corners
- Toe board fixing brackets
- Simple to install



01924 420820
safetyplatforms.co.uk
info@safetyplatforms.co.uk

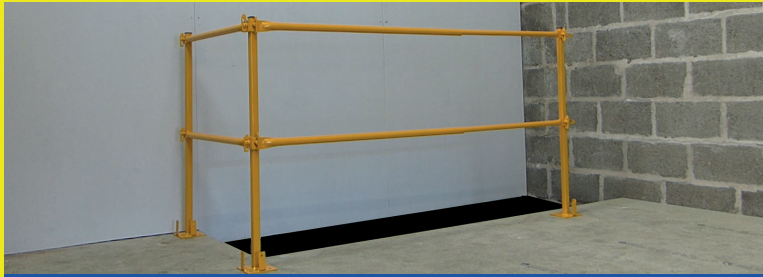
AUTUMN 2022
CATALOGUE

TELESCOPIC GUARDRAIL SYSTEM

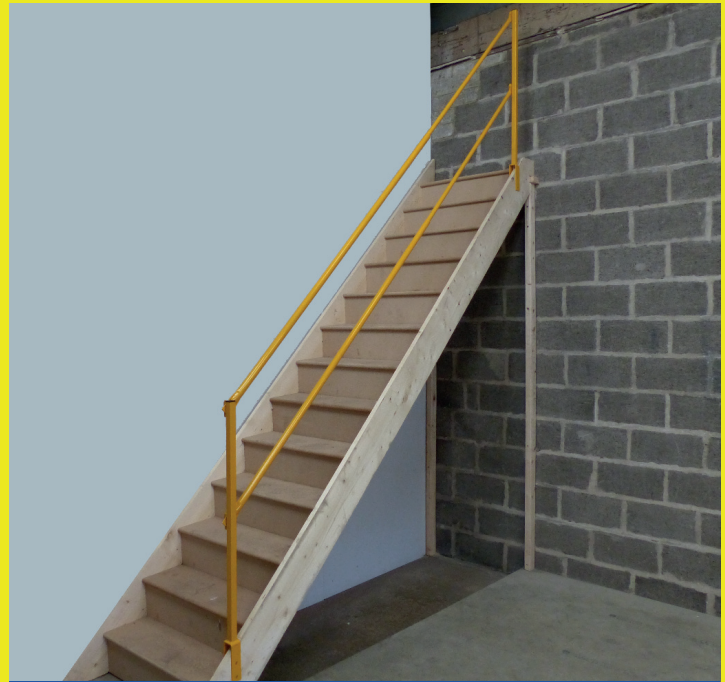
The system comprises of steel posts which are fixed to the floor via screws through the base plate. The posts are then connected via telescopic tubes to form a double guard rail. Toeboards can be secured to the base plates if required.

The posts have anti-luce fittings on two adjacent faces meaning they can be used at corners, end of runs or mid-posts.

Highly visible method of forming edge protection by securing posts to the floor and linking with telescopic metal rails.



Typical L Shape Arrangement



Typical Stair Arrangement



Newel Plate



Newel Box Fitting



Guardrail Post

EDGE PROTECTION SYSTEM

Simple and secure edge protection created by securing posts to the floor and forming double guardrails using timber.

- Very simple edge protection
- Secure fixing - 4 screws through base plate
- Universal post works at corners and ends
- Toeboard can be secured to base plate
- Fast installation and removal
- Cost saving verses timber framework by joiner
- Complies with Work at Height Regulations
- UK manufactured – next day delivery

Universal post suits any stairwell configuration



STA SYSTEM - SAFE TRUSS ACCESS



The **S.T.A. System** is now the industry standard solution used by all major housebuilders for safely fixing timber bracing to roof trusses

EASIER - SAFER - FASTER

- The **S.T.A. System** provides a safe means of access to higher levels of the truss where timbers are fixed
- In line with **HSE** guidelines the STA system extends at least 1m (3 rungs) above the foot rung level
- Trusses to each side of the operative provide additional protection
- Lateral restraint brackets prevent sideways movement of the system
- Joiners do not need to climb trusses
- One **S.T.A. System** position fixes four trusses (two trusses on either side)

Due to the short duration work and multi work positions the **S.T.A. System** is a practical, cost effective solution to what is an extremely high risk work activity.

STAIRSAFE - STAIRWELL PLATFORM SYSTEM



Stairsafe is the most popular Stairwell platform in the UK, having sold thousands of units since its launch in 2003!!

- Half the weight of other products on the market
- Incredibly fast to assemble – takes less than two minutes
- Extremely safe
- No specialist training required due to its unique simple design
- Next day delivery
- Less than half the price of other products

Are your sites using the **LIGHTEST, EASIEST TO USE, SAFEST** Stairwell solution in the UK??

SCAN ME
To watch
the video



Stairsafe on Kitewinder



LADDER HATCH

LOADING HATCH

Safe Ladder access to upper floors can be formed by incorporating a small trapdoor opening between the joists. Allows safe, easy access between floors before the permanent stairs are installed.

Manufactured from strong, lightweight aluminium with an anti-slip surface it fits between the joists and requires minimal installation.

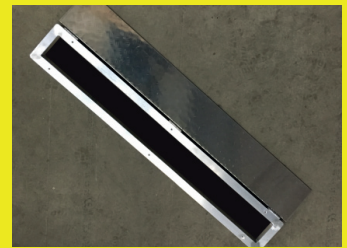
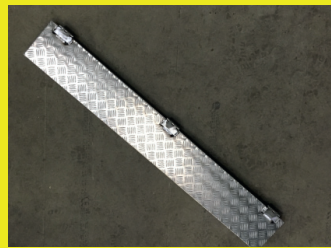
Easy to move from plot to plot to improve productivity and obtain maximum use.

Plaster board letterbox or plasterboard loading hatch has been designed to post large plasterboard sheets or other panel material from lower to upper floors.

Removes the need to carry plasterboards up stair openings.

There are 6 fixing holes to allow the plasterboard hatch to be fixed securely to the flooring.

Improves productivity and creates a safer method of working



DELTA DECK

TELETOWER

FOLDING SCAFFOLD

- A one piece access platform
- Less than 1 minute to assemble.
- Built in guardrails for increased safety
- Larger working platform than podium
- Working height up to 3.0m



- Fast assembly telescopic platform
- Fits through doorways
- Safe access via trapdoor
- Folds flat for easy storage
- Up to 2.0m platform height
- Up to 4.0m working height



- Fast assembly tower scaffold
- Fold out base for easy assembly
- Platform can be positioned on any rung level to for ideal working height
- Available up to 6m platform height
- Complies with HD1004



SMALL STEPLADDER

Lightweight yet robust step ladder featuring a large platform for a comfortable standing area. The high handrail provides security whilst working on your projects. TUV approved to EN131 professional. Full range of sizes and types available.



TELESCOPIC LADDER

The Zarges Telemaster telescopic ladder is the ideal solution for the trade or DIYer. The telescopic system means the Telemaster is easy and convenient to transport and use.

Due to the compact folded size the Telemaster is easy to store and carry.



EXTENSION LADDER

- 2 and 3 sections available
- Built in stabiliser bar
- Comfortable "D" shaped rungs
- Meets EN131 Professional
- 8 - 18 rungs
- Large range of heights



SAFE STEP



- Heavy Duty plastic step
- EN131 Compliant SWL 150kg
- Alternative to crates
- 300mm high
- Slip resistant platform
- Rubber slip resistant feet
- Tapered for greater stability

FOLDING PLATFORM



- Lightweight sturdy platforms
- EN131 Compliant
- SWL 150kg
- Trigger lock safety hinge
- Stabilizer for greater stability
- 300mm wide
- 500mm or 600mm high

BIG FOOT



Bigfoot's 600 x 800mm platform provides a safe and comfortable working area. It's 600mm height caters for more ceiling heights and greater flexibility.

LADDER GUARD

The simple one piece design of the ladder guard means no loose components to lose or break, just one piece of engineered steel which can be secured by a padlock.

The ladder guard can also be used simply to inform site personnel not to climb a ladder as the scaffold may be incomplete or not yet inspected.



BOARD TROLLEY

- Carrying capacity - 20 sheets of 12.5mm board (approx)
- Carrying capacity 820kg
- Manufactured from 30mm tubular steel
- Two fixed and two swivel castors with rubber tyres



Made in our own factory in the UK