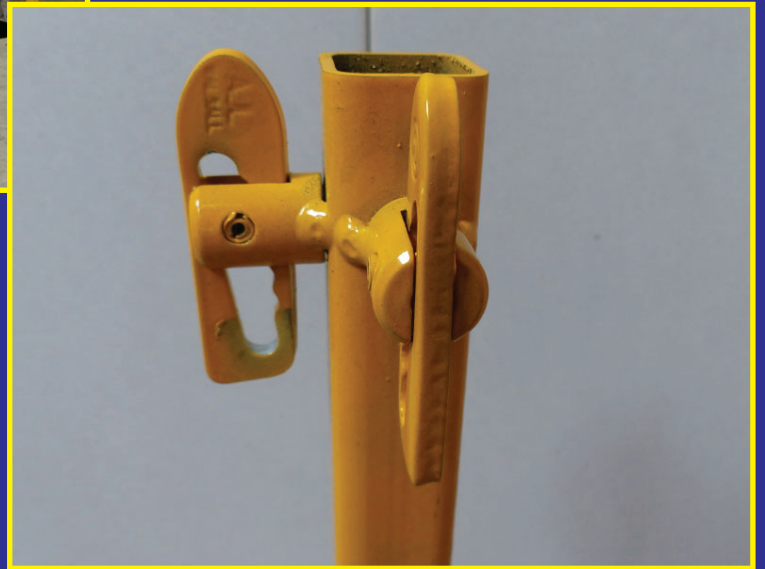
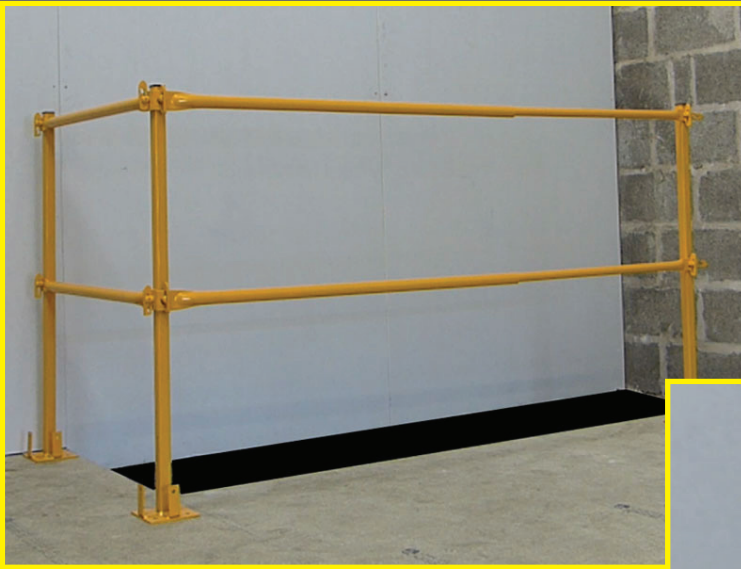


safety platforms ltd

20 Years of improving site safety



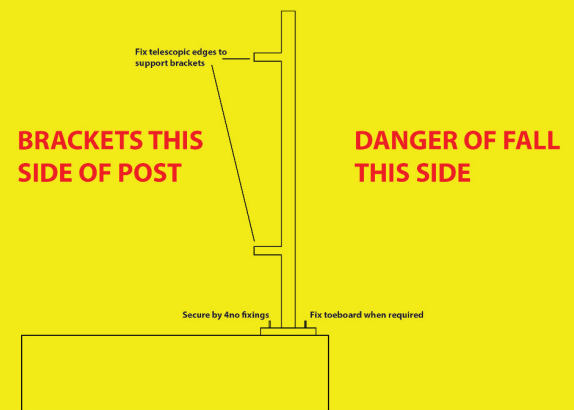
TELESCOPIC EDGE PROTECTION USERGUIDE

Call 01924 420820

INTRODUCTION

The following information is intended to allow the safe use of Edge Protection Posts with telescopic guard rails to form a safety guardrail around stairwells and floor openings.

1. Maximum distance between posts determined by floor structure & fixing method.
2. Space posts at maximum distances apart to ensure telescopic edge protection can span between the posts and resist the possible loads. System tested at 1.8m centres.
3. Ensure floor is capable of resisting loads imposed by fixings.
4. Ensure fixings are suitable to resist all possible loads imposed by edge protection.



SAFETY, PREPARATION & INSTALLATION

1. Prior to use inspect posts for signs of damage broken welds etc.
2. Inspect timber to ensure it is free from damage excess knots, saw cuts, etc.
3. Position posts adjacent to floor opening with welded brackets on face of post away from opening.
4. Consider positioning posts above joists for increased fixing strength or consider fixing additional strengthening timber to underside of floor boarding.
5. Fix posts to floor using 4no fixings of suitable strength.
6. Span telescopic posts between posts at upper and mid guardrail levels and fix

STORAGE & MAINTENANCE

Check that all components are available and are functioning correctly.
Inspect the equipment before use to ensure it is not damaged, or failing to function properly.

Ensure you are using the correct PPE equipment.

The opening should be prepared with adequate support and the supports should be screwed to the chipboard floor ensuring all fixing holes are used to ensure a firm fixing.

(Fixing screws should be a minimum of 4mm (8G) x 45mm chipboard screws.)



INSPECTION

Inspect regularly (daily / weekly) dependant on risk, possible interference.

Any damaged items should be replaced immediately and disposed of through recycling

Storage

When not in use all components should be stored in a safe area to prevent trip hazards, damage or loss of components.

QUESTIONS?

If you have any questions ask your line manager or contact Safety Platforms Ltd.